

DASH NO. RANGE	"D" DIA. RANGE	"E" DIMENSION	"R" RADIUS	"T" GAUGE
-4 THRU -16	1/4" TO 1"	"D"/2 + .514	.062	.031
-17 THRU -96	1-1/16" TO 6"	"D"/2 + .534	.109	.050

REV.	CHANGE	DATE	BY	CHK'D	APPR
P	SEE DRAWING CHANGE RECORD ON FILE.	09/25/13	HAD	KWE	HAD

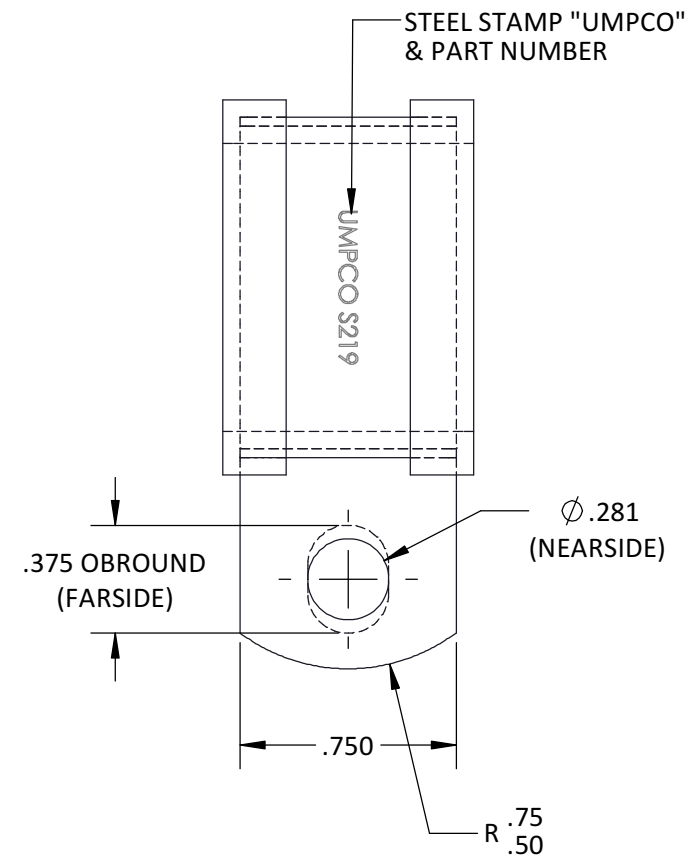
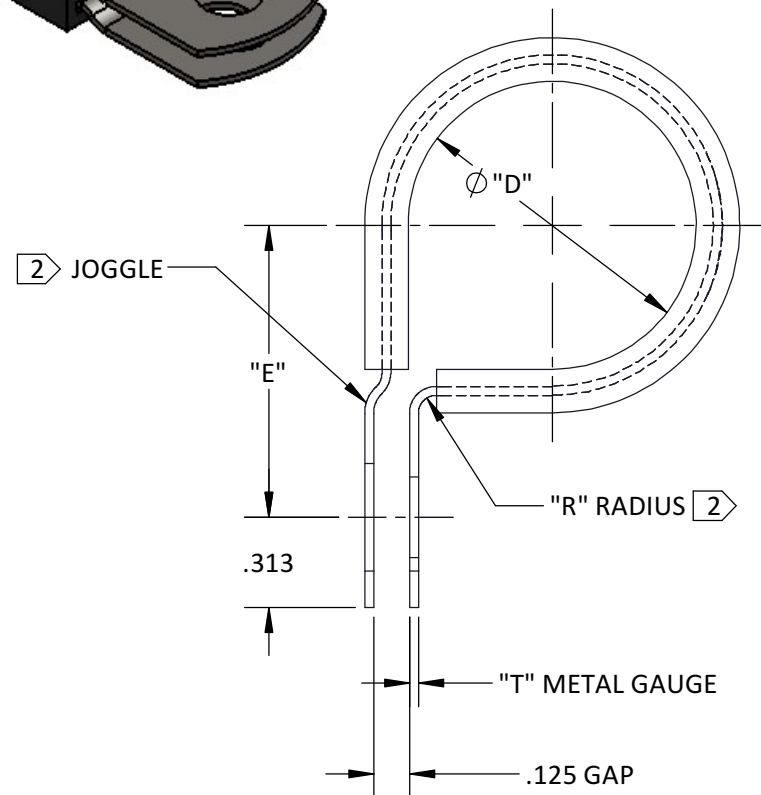
MATERIAL & FINISH CODES:

METAL: "NO CODE" 1008/1020 LOW CARBON STEEL PER ASTM A 1008, ASTM A 109, QQ-S-698
 FINISH: ZINC PLATE BRIGHT PER ASTM B 633, Fe/Zn 8, TY. III ①
 "P" 1008/1020 LOW CARBON STEEL PER ASTM A 1008, ASTM A 109, QQ-S-698
 FINISH: ZINC PLATE GOLD PLUS SEALER PER ASTM B 633, Fe/Zn 13, TY. II
 "D" 2024-T42 ALUMINUM ALLOY PER AMS-QQ-A-250/5
 FINISH: NONE
 "SS" 304/321 STAINLESS STEEL PER AMS 5513/AMS 5510
 FINISH: NONE

CUSHION: "G" GENERAL PURPOSE EPDM PER SAE J200 M3 BA 710 C12
 COLOR: BLACK
 "H" GENERAL PURPOSE SILICONE PER AMS 3303 WITH 100 PSI MIN. TEAR
 COLOR: RED/ORANGE
 "N" GENERAL PURPOSE NEOPRENE PER AMS 3209
 COLOR: BLACK
 "T" TEFLON SKIVED PER AMS 3652
 COLOR: WHITE

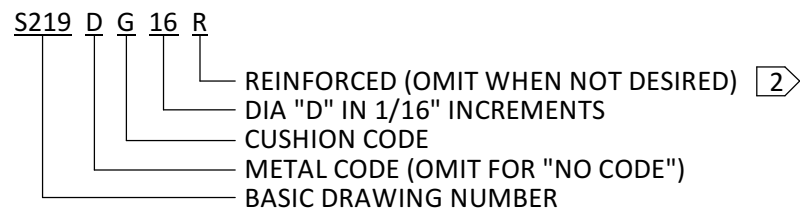


S219



EXAMPLE OF PART CALLOUT:

1" DIA. REINFORCED ALUM. CLAMP W/EPDM CUSHION



NOTES:

- ① OPTIONAL FINISH: CADMIUM PLATE BRIGHT PER AMS-QQ-P-416, TY. 1, CL. 2
- ② REINFORCED CORNERS AND BEADED JOGGLE PER DS1010 WHEN SPECIFIED.
- 3) CLAMPS FURNISHED IN THE NORMAL OPEN (SPRINGBACK) CONDITION.
- 4) INSPECT PER MIL-C-8603 CLOSURE TEST.

SHEET 1 OF 1

REFERENCES:								
LIMITS ON DIMENSIONS UNLESS OTHERWISE SPECIFIED:	ANGULAR:	X	± 5°			FSCM/CAGE CODE No. 18076		
	DECIMAL:	.XX	± .03			KEL	KEL	LJS
GENERAL MACHINE FINISHES EXCEPT AS NOTED:	PROPRIETARY AND CONFIDENTIAL THE INFORMATION CONTAINED IN THIS DRAWING IS THE SOLE PROPERTY OF UMPCO, INC. ANY REPRODUCTION IN PART OR AS A WHOLE WITHOUT THE WRITTEN PERMISSION OF UMPCO, INC IS PROHIBITED.			7100 LAMPSON AVE. P.O. BOX 5158 GARDEN GROVE, CA. 92846		03/06/78	03/06/78	04/21/99
	INTERPRET GEOMETRIC TOLERANCING PER: ASME-Y14.5M			CLAMP, LOOP-CUSHIONED		DRAWN	CHECKED	ENGR
REMOVE ALL BURRS AND BREAK SHARP EDGES .010 MAX	ACT. WGHT.	-		PART AND/OR ASSEMBLY DESCRIPTION		SCALE: NONE		
	CALC. WGHT.	-				B S219		
						PRINT NUMBER		